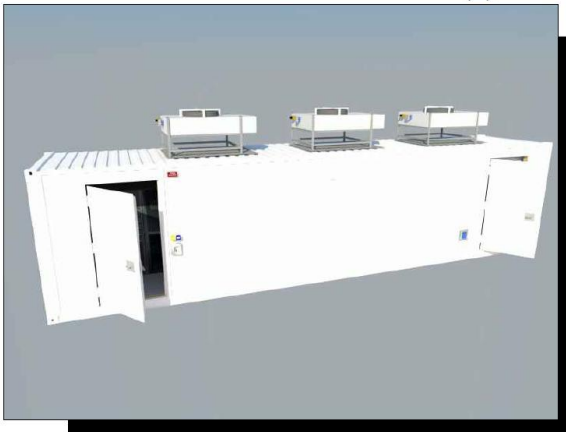




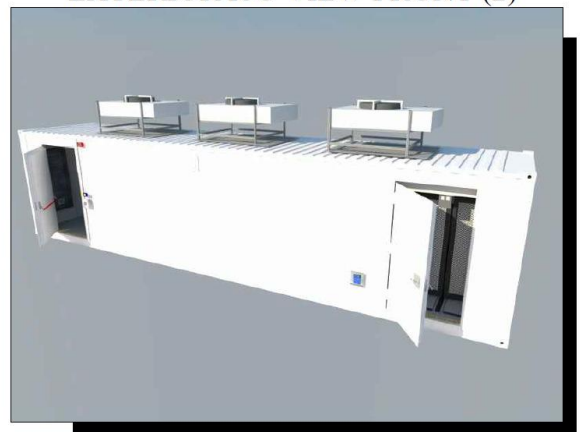
ANEXO A – DIAGRAMAS DA INFRAESTRUTURA DO DATA CENTER

1. AS BUILT – CONTAINER

EXTERIOR ISO VIEW FRONT (1)



EXTERIOR ISO VIEW FRONT (2)



CONTAINER

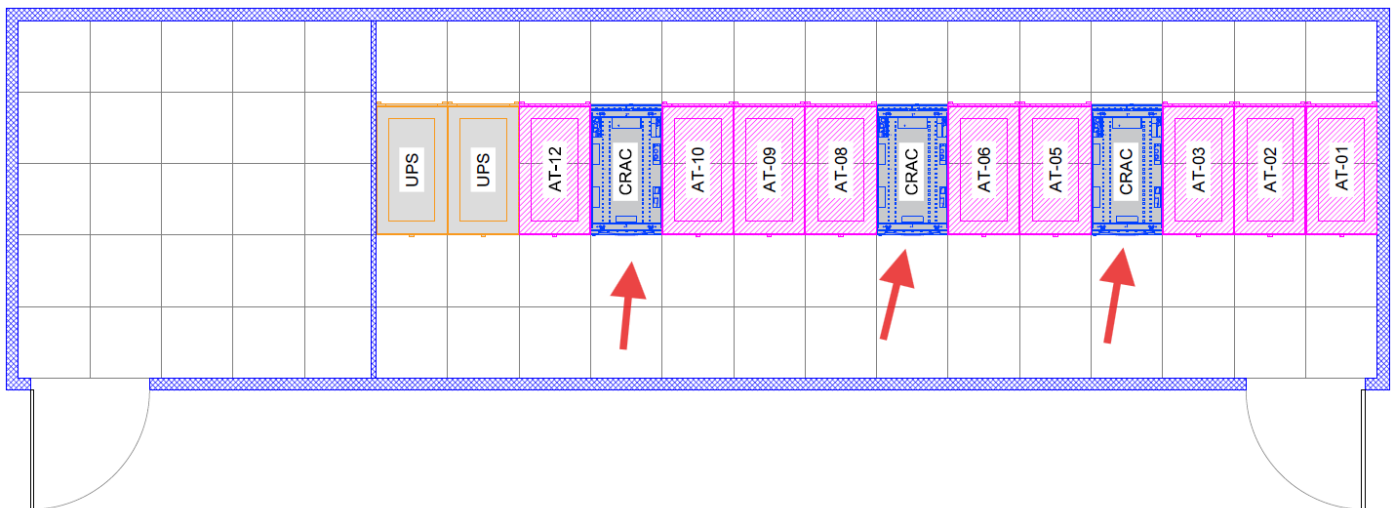
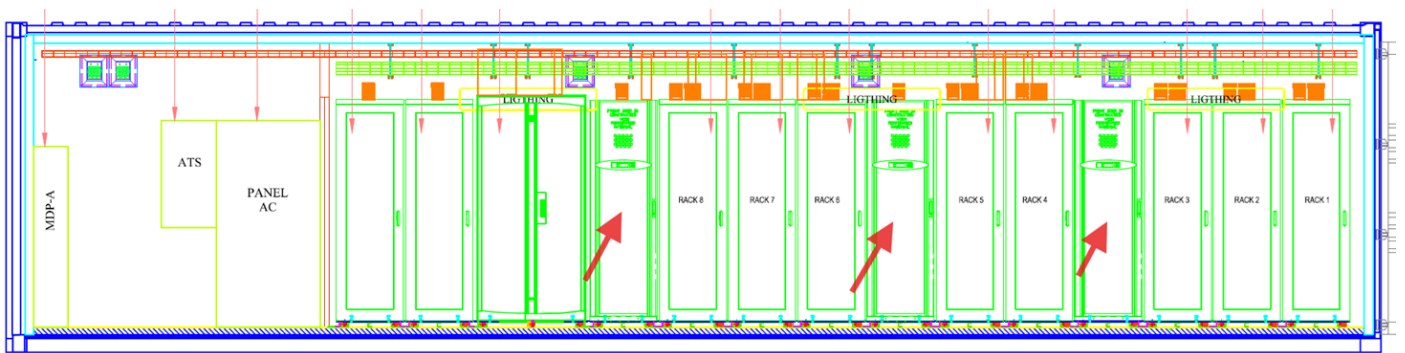
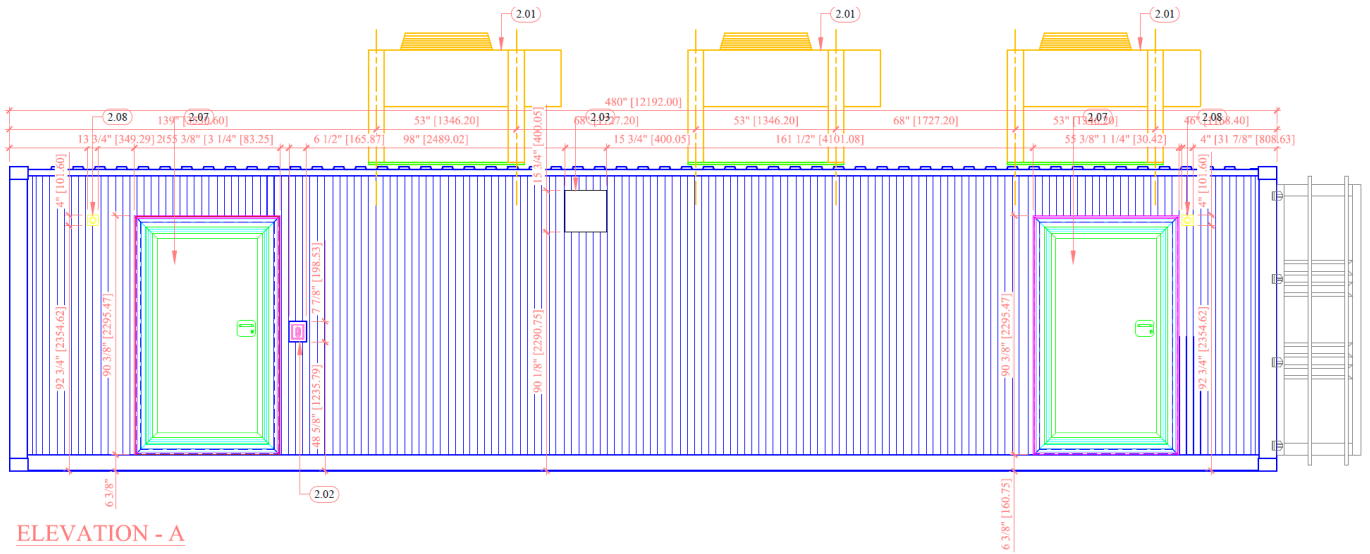


Figura 1 - Não está em escala

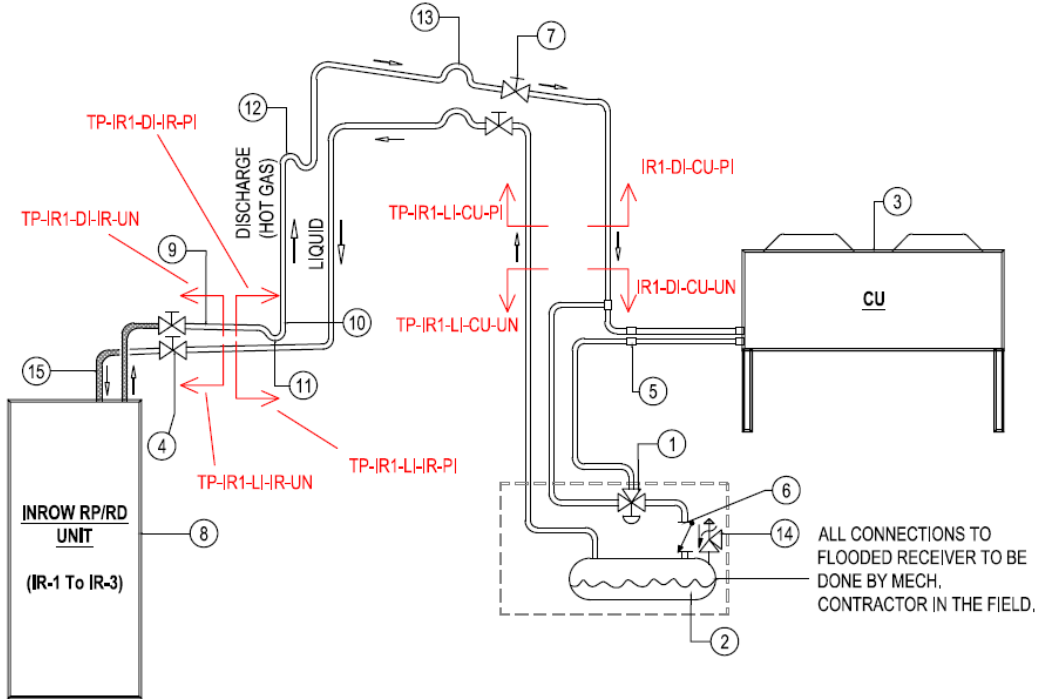


PODER JUDICIÁRIO FEDERAL
JUSTIÇA DO TRABALHO
TRIBUNAL REGIONAL DO TRABALHO DA 9ª REGIÃO
SECRETARIA GERAL DE TECNOLOGIA DA INFORMAÇÃO E COMUNICAÇÕES





2. AS BUILT – CLIMATIZAÇÃO



- | | |
|--|---|
| ① HEAD PRESSURE CONTROL VALVE | ⑨ PITCH IN DIRECTION OF REFRIGERANT FLOW, 1/2 IN PER 10 FT |
| ② FLOODED RECEIVER (FIELD INSTALLED AND CONNECTED) | ⑩ REDUCTION OF PIPING DIAMETER FOR VERTICAL PIPING RUN (IF NECESSARY) |
| ③ CONDENSER (CONDENSING UNIT) | ⑪ "P" TRAP |
| ④ SHUTOFF VALVES | ⑫ "S" TRAP |
| ⑤ SCHRADER VALVE | ⑬ INVERTED "P" TRAP |
| ⑥ CHECK VALVE | ⑭ PRESSURE RELIEF VALVE |
| ⑦ SHUTOFF VALVES | ⑮ FLEXIBLE TUBING |
| ⑧ IN ROW RD OR RP UNIT | |

NOTES:

1. TRAP THE VERTICAL DISCHARGE LINE EVERY 6 MTS. (20 FT.) TO ENSURE PROPER OIL RETURN.
2. CHANGE SIZE OF VERTICAL RUN AFTER "P" TRAP (IF REQUIRED).



PODER JUDICIÁRIO FEDERAL
JUSTIÇA DO TRABALHO
TRIBUNAL REGIONAL DO TRABALHO DA 9ª REGIÃO
SECRETARIA GERAL DE TECNOLOGIA DA INFORMAÇÃO E COMUNICAÇÕES

